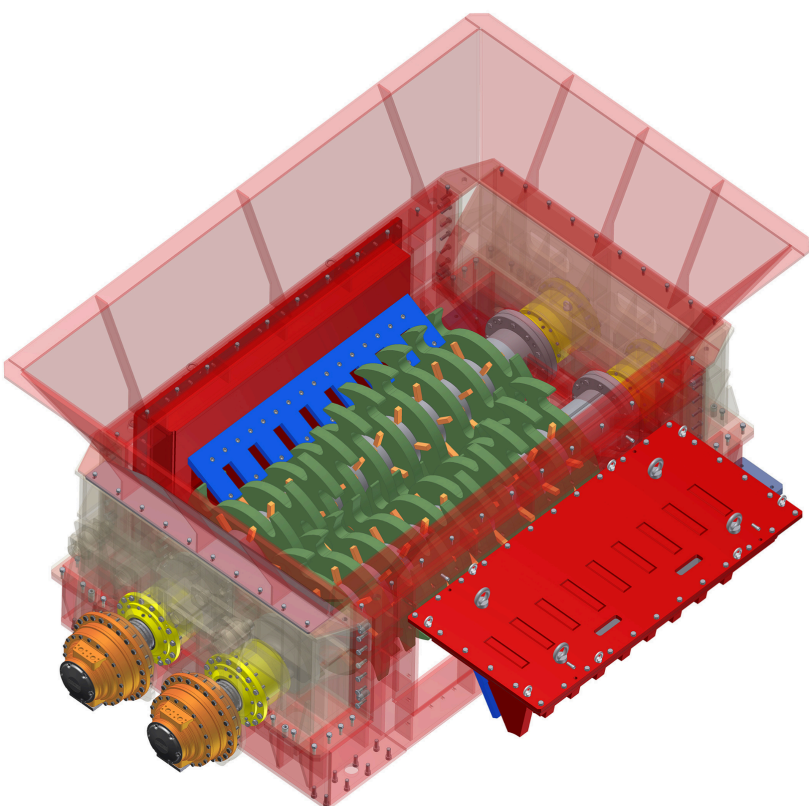


PRIMARY SHREDDER PROMECO PREMIER



Promeco two shafts shredder Premier is the biggest primary shredder manufactured by Promeco and is suitable to shred every kind of waste and bulky waste. The wide hopper allows the feeding of bulky waste and the two independent shafts with special discs equipped with special cutting discs enable the Premier to shred all kind of waste down to <A3 size.

TECHNICAL FEATURES

- Bearing box detached from the machine body
- Blades coated in resistant steel
- No middle cutting tables
- Reliability
- Versatility
- Ease of maintenance

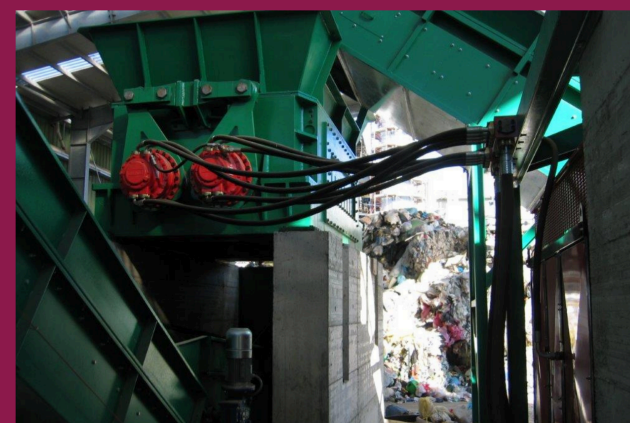
INPUT MATERIAL

- Municipal solid waste
- Bulky waste
- Industrial waste
- Plastic waste
- Tyres



OUTPUT MATERIAL

- Shred material in different sizes based on customer's requirements

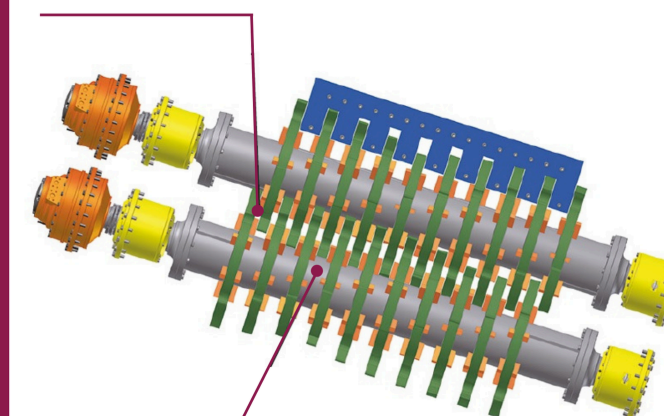


MODELS AVAILABLE

Rotor's length:
2500 mm

Power:
2x132 kW - 2x160 kW - 2x250 kW
Customized models upon request

NO MIDDLE
CUTTING TABLE

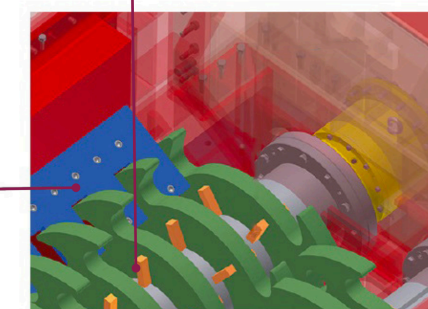


WEAR PREVENTION SHELLS
TO PROTECT THE SHAFTS

PROCESSING CAPACITY

The processing capacity reaches 100 t/h and can vary according to size and density of the material, motor's power and rotors' size. The non-shreddable materials are automatically rejected.

PATENTED BREAKING BLOCKS



ADJUSTABLE REMOVABLE COMBS