

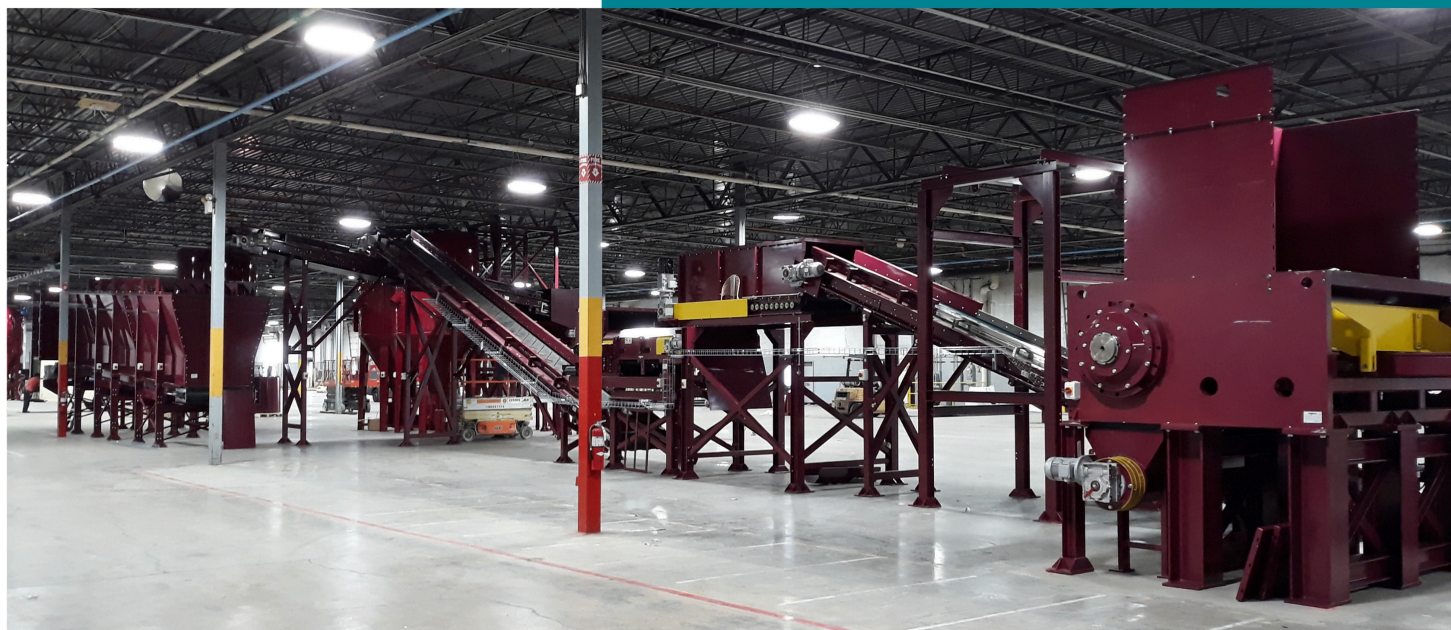
# FEEDSTOCK PRETREATMENT FOR CHEMICAL RECYCLING

Chemical recycling of waste plastics requires a dedicated pretreatment of the feedstock to make it suitable to be processed. The quality of the feedstock and therefore of the end products is improved.



Promeco pretreatment plant for chemical recycling feedstock includes:

- Sorting
- Screening
- Size reduction



## INPUT MATERIAL

- Mixed plastics
- Post industrial plastic waste
- Hard-to-recycle plastics

## OUTPUT MATERIAL

- Cleaned, screened, sorted polymers
- High concentrated plastic content
- Fluff or densified
- With low ash, chlorine and moisture

